

## MOVING COMPSCORE3 AND BRIDGEMATES TO A NEW PC

When you have purchased a new PC and need to move Compscore3 and the related Bridgemate program across, there are three steps.

The first thing to remember is not to plug in the Bridgemate server until after the Bridgemate software has been installed.

### STEP 1: INSTALL COMSPCORE3

On the Altosoft web site (altosoft.com.au), choose **Evaluation**. Follow the prompts to install the program. We recommend you install it to the default folder which is C:\Compscore3. Don't open it yet.

If you still have the old computer, copy all the contents of C:\Compscore3, including all sub-folders, to the same location on the new PC. This will bring across everything you need, including your Compscore3 database, preferences, licence details and templates. Now open Compscore3. Everything should look the same as the old PC's Compscore3.

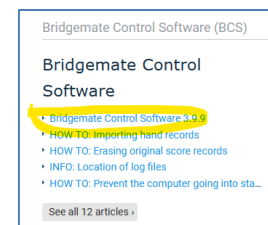


If you don't have the old PC or it is no longer working, open Compscore3, enter your licence details when prompted, select **Setup | Options**, and ensure all your preferences are as you want them. These can be changed later if necessary.

### STEP 2: INSTALL BRIDGEMATE SOFTWARE

The next step is to install the Bridgemate Control Software (BCS).

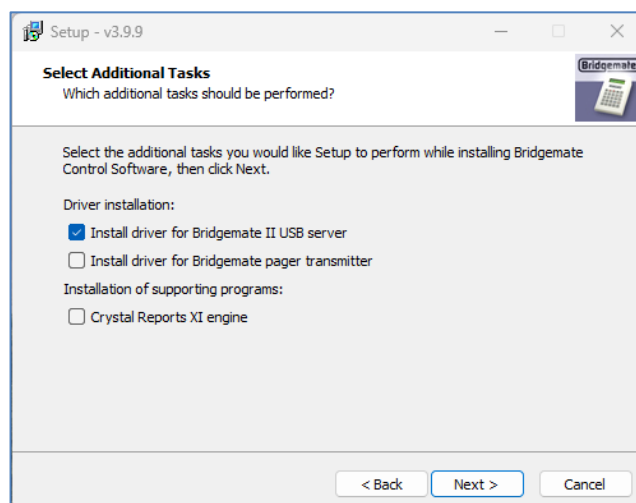
Go to the Bridgemate site (bridgemate.com) and select **Support**. Scroll down to Bridgemate Control Software and click **Bridgemate Control Software 3.9.16** (or whatever the current version is).



Follow the prompts to start installing the program. Accept all the defaults as offered, but on the **Select Additional Tasks** tab, make sure the option to **Install the Bridgemate II driver** is ticked.

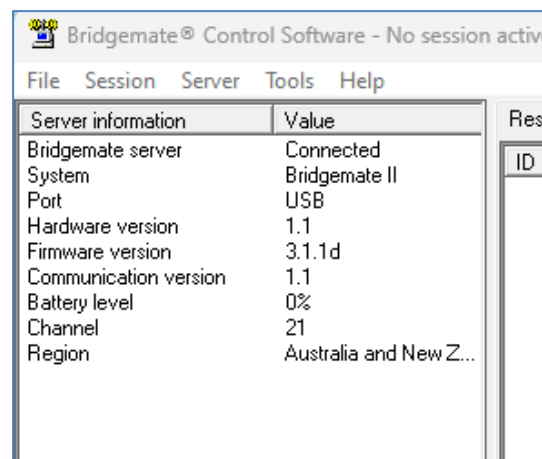
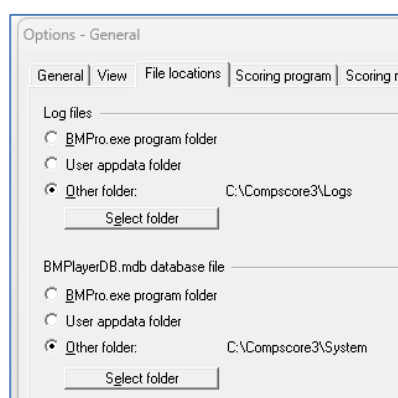
This will then install the Bridgemate Control Software to your PC.

Now you can plug in the Bridgemate server, and launch the Bridgemate Control Software. If all is well, you will see two green lights on the Bridgemate Server, and the top left box in the Bridgemate Control Software will show that you are successfully connected.



There is an optional step, which is helpful if we need to help with any problems you might have later. In the BCS, under the menu **Tools | Options | General**, select the **File Locations** tab and set the **Log File Location** to C:\Compscore3 logs and **BMPlayerDB Database File Location** to C:\Compscore3\System.

Close the BCS.



### STEP 3: LINK THE TWO PROGRAMS

The final step is to link the Bridgmate Control Software with CompScore3.

Open CompScore3, select the menu item **Setup | Options**, and choose **Bridgmate Options**. At the top of the right side, you will see **Full Path and File Name for Bridgmate Control Software or equivalent**. This needs to be the location of BMPPro.exe which is the launch program for the BCS. It may be as pictured at right, or it may be in another location.

You can test this now by creating a test session with any session parameters, and launching as normal.

